

# DOUBLE SERIES



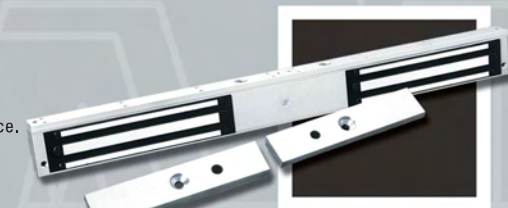
## UL135-D

- Up to 300lbs. holding force.
- For swinging doors.



## UL275-D

- Up to 600lbs. holding force.
- For swinging doors.

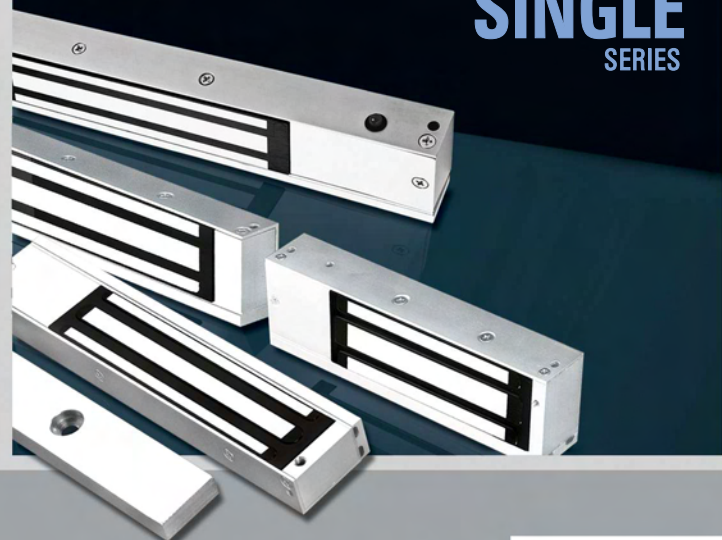


## UL545-D

- Up to 1200lbs. holding force.
- For swinging doors.

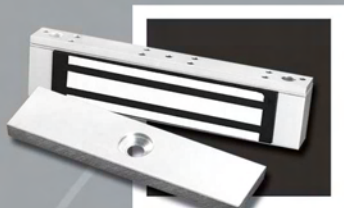


# SINGLE SERIES



## UL135-S

- Up to 300lbs. holding force.
- For small enclosures.



## UL136-SL

- Up to 300lbs. holding force.
- For small enclosures.



## UL275-S

- Up to 600lbs. holding force.
- For swinging doors.



## UL545-S

- Up to 1200lbs. holding force.
- For swinging doors.



# MORTICE SERIES



## UL135-M

- Up to 300lbs. holding force.
- For sliding doors.



## UL275-M

- Up to 600lbs. holding force.
- For sliding doors.



## UL545-M

- Up to 1200lbs. holding force.
- For sliding doors.



## UL30035-M

- Up to 600lbs. holding force.
- For sliding doors.



# WATER PROOF SERIES



## EXT135-SL

- Up to 300lbs. holding force.
- For indoor & outdoor application.



## EXT325-SL

- Up to 800lbs. holding force.
- For indoor & outdoor application.



## EXT325-SL-CG

- Up to 800lbs. holding force.
- For indoor & outdoor application.



## EXT545-SL

- Up to 1200lbs. holding force.
- For indoor & outdoor application.



## EXT545-SL-CG

- Up to 1500lbs. holding force.
- For indoor & outdoor application.



# BRACKET



## "LS" BRACKET

- For narrow door frame



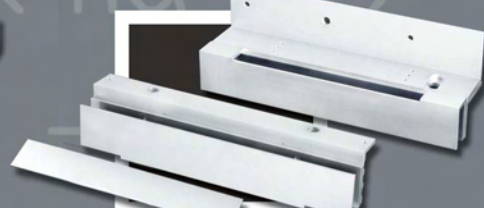
## "ZL" BRACKET

- For in swinging doors



## "GG" BRACKET

- For full glass doors



## "U" BRACKET

- For frameless glass doors

